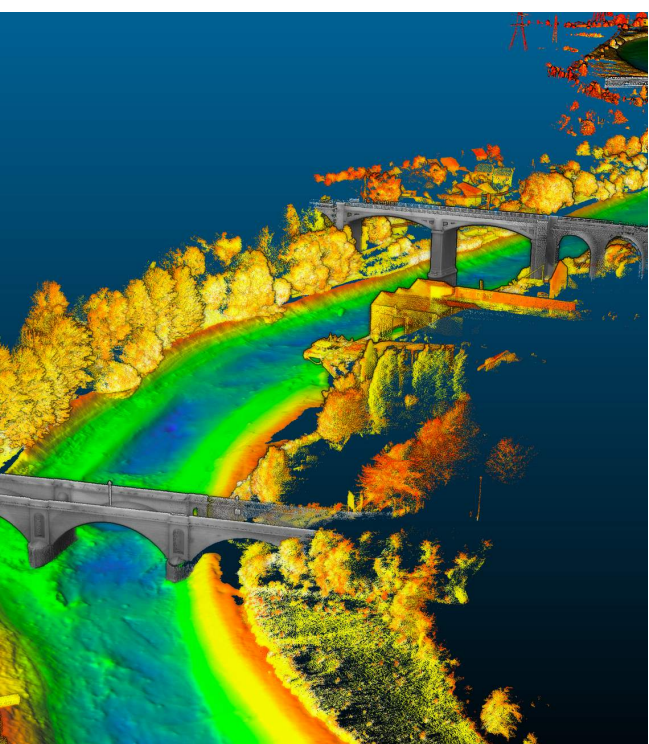
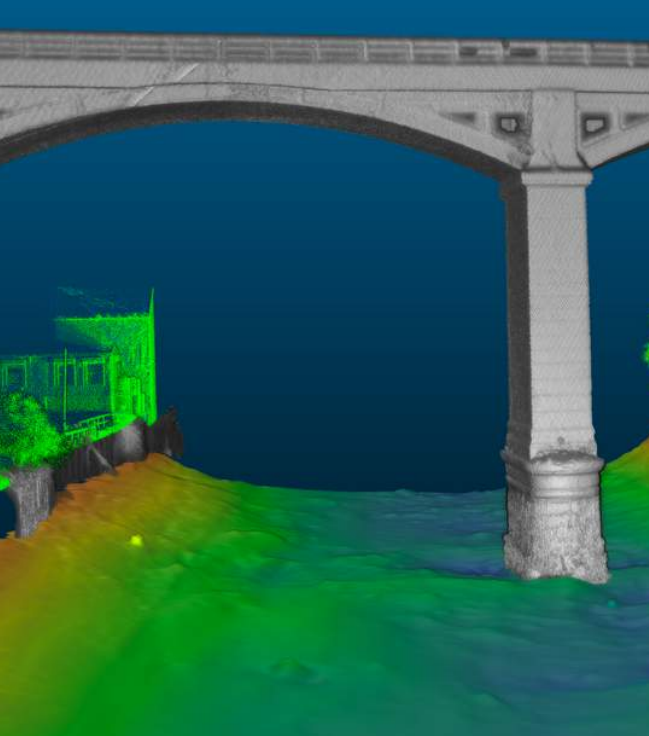
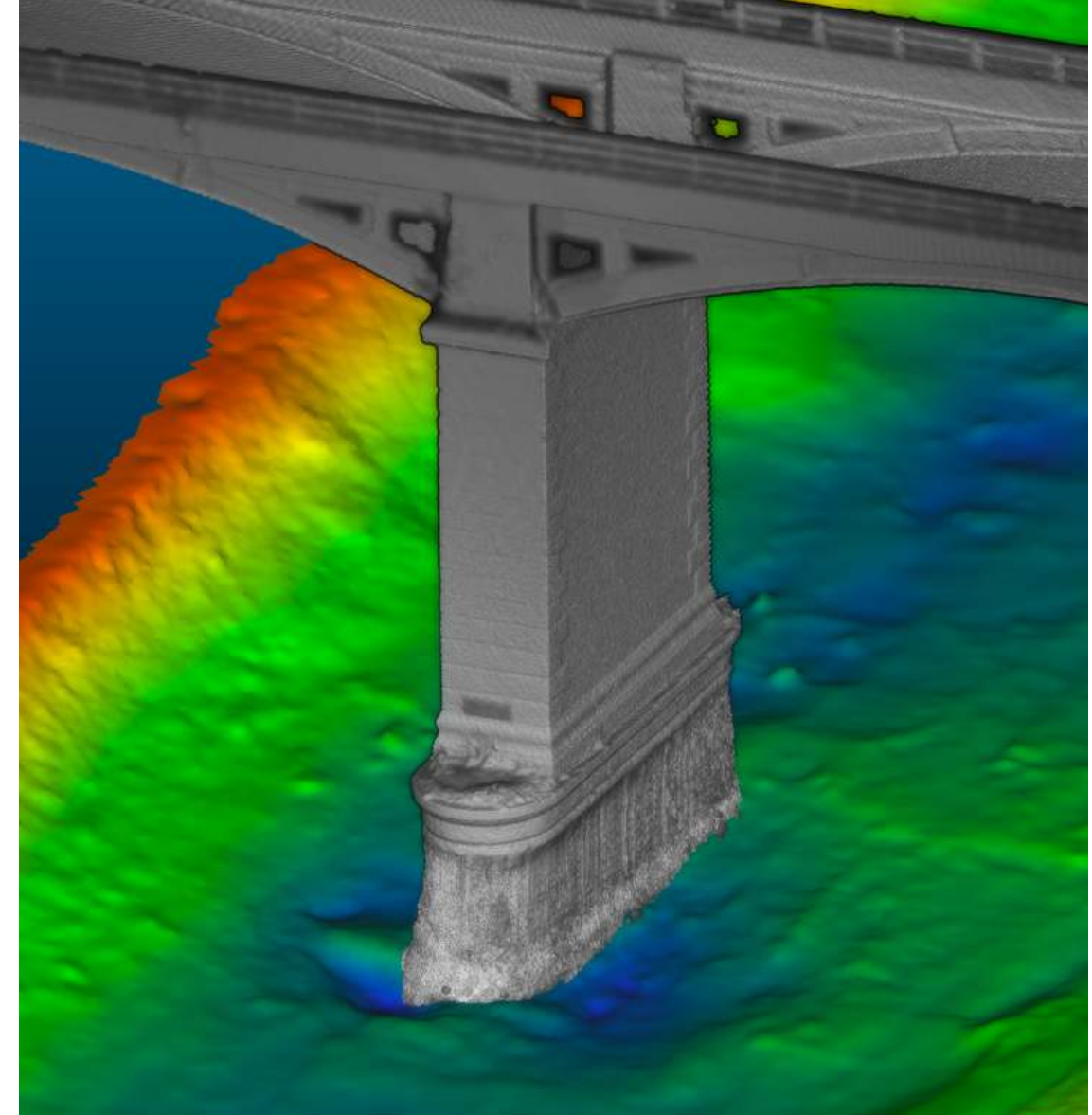




Capture reality

SEP Hydrographic Limited
Unit 3D Selby Place, Stanley Industrial Estate,
Skelmersdale WN8 8EF
Tel: 01695 729 835
<https://www.sephydrographic.com>
Email: info@sephydrographic.com



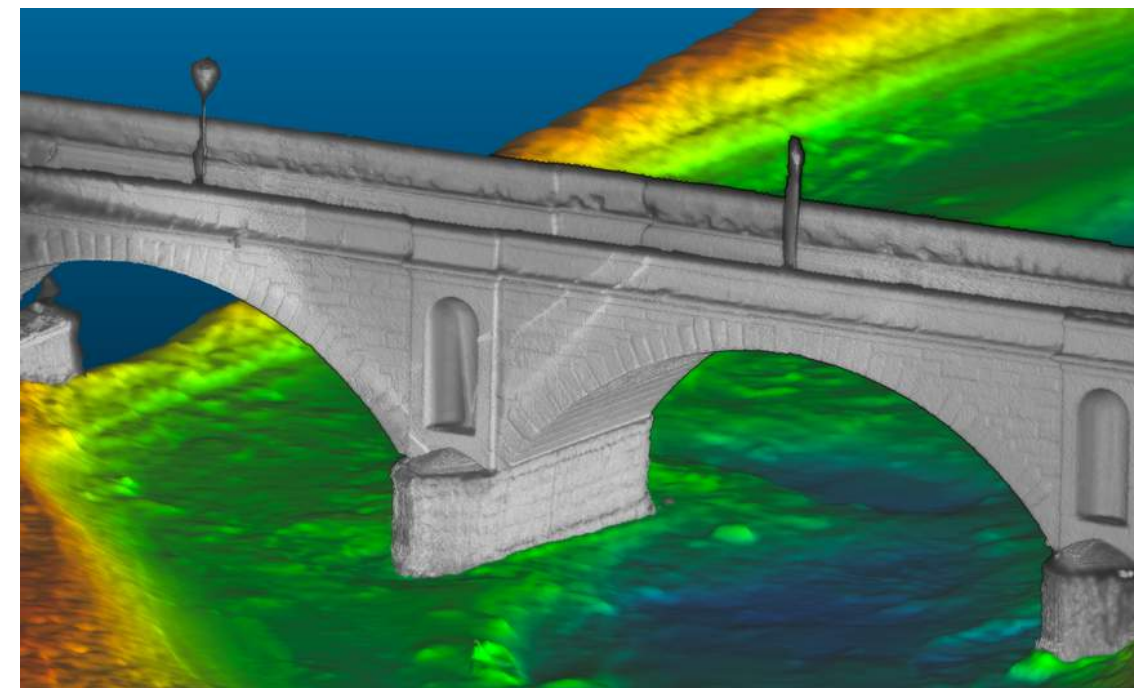
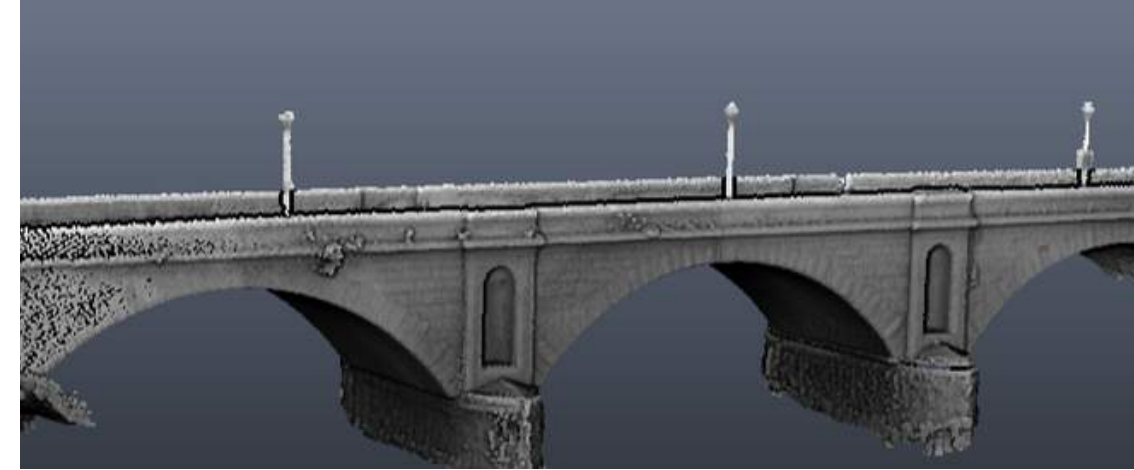
About Us

Survey and Engineering Projects have completed thousands of projects, working on some of the most recognisable landmarks in the UK. We continue to expand and diversify our portfolio of services to meet the evolving needs of our clients.

SEP Hydrographic Limited was established in 2020 to meet the growing demand for a complete land and marine survey solution. Our SEP Hydrographic leadership team benefits from more than 45 years of experience providing various marine survey services to international oil, gas, renewable energy and utility companies.



© 2020 SEP Hydrographic Limited



Group Accreditations



Sectors

Bridges & Structures

Ports & Harbours

Dams

Inland Waterways

Coastal Monitoring

Utilities

Offshore Wind

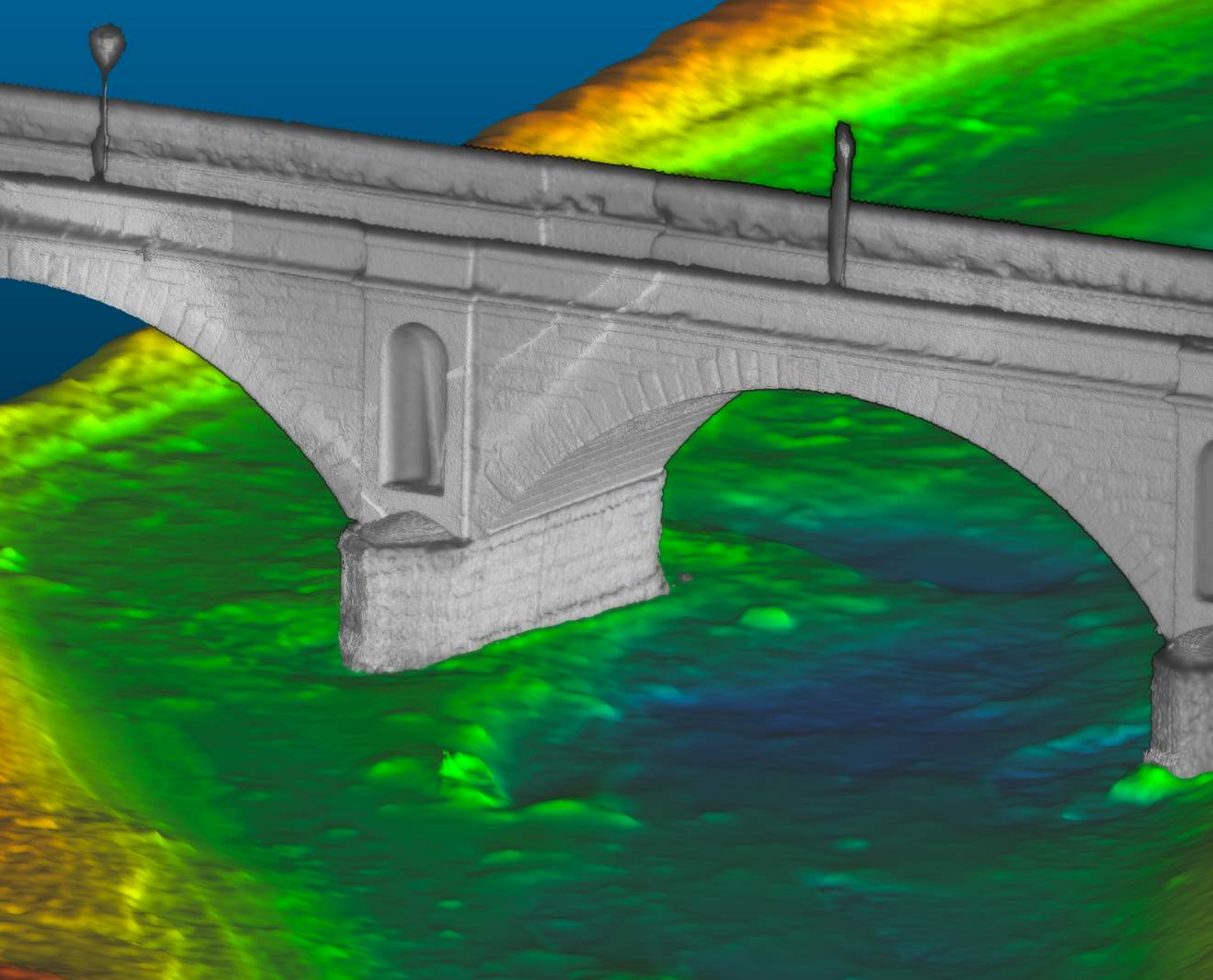
Oil & Gas



Consistently breaking barriers by moving engineering surveying and mapping forward.

We work with clients from a range of sectors to provide general asset integrity inspection and monitoring, post-storm or damage event surveys and pre-construction engineering surveys.

Our combined land and marine service offering allows us to provide an efficient, integrated solution to our clients.



Our Services

Asset Inspection Surveys
Hydrographic Surveys
Geophysical Surveys
Oceanographic and Environmental
UAV Surveys
Land Surveys
BIM & CAD Services
Online Data Portal



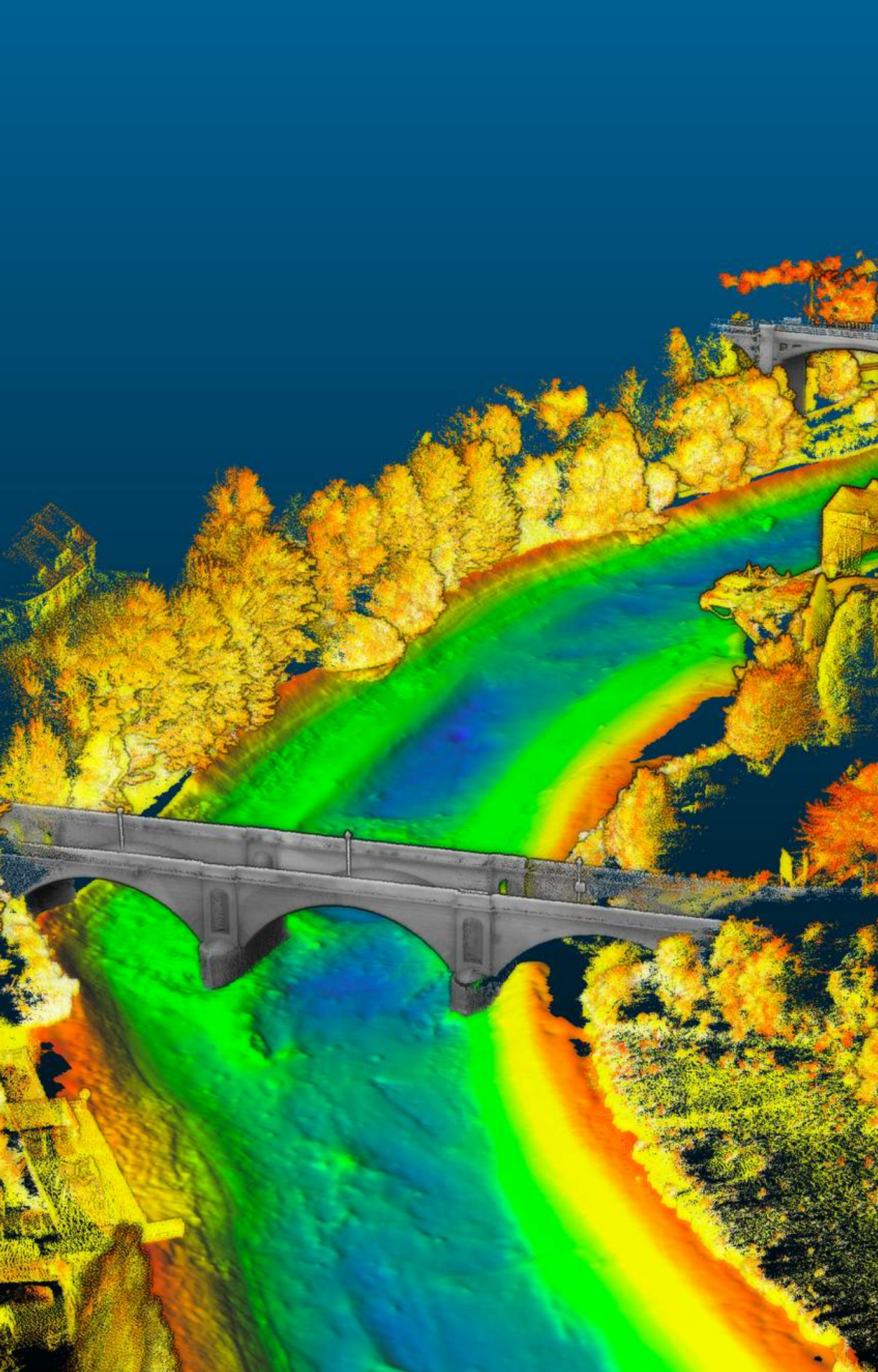
Rapid
Response



>45 Years of
Survey
Experience



Online Data
Portal



Complete Survey Package

The SEP Hydrographic team provides a range of high-quality marine surveys to supplement our existing offering and offer a complete end to end service. Multibeam bathymetry, 3D Scanning Sonar, Laser scanning and photogrammetry techniques are combined to provide detailed visualisations of subsurface assets, both above and below the waterline.

The result is a high-resolution, BIM-compatible dataset in comparison to traditional hydrographic surveys, which can then be brought into our accessible online viewer for further interrogation.

Geophysical techniques including side scan sonar data, magnetometer and sub bottom profiler acquisition forms another area of expertise for the business.

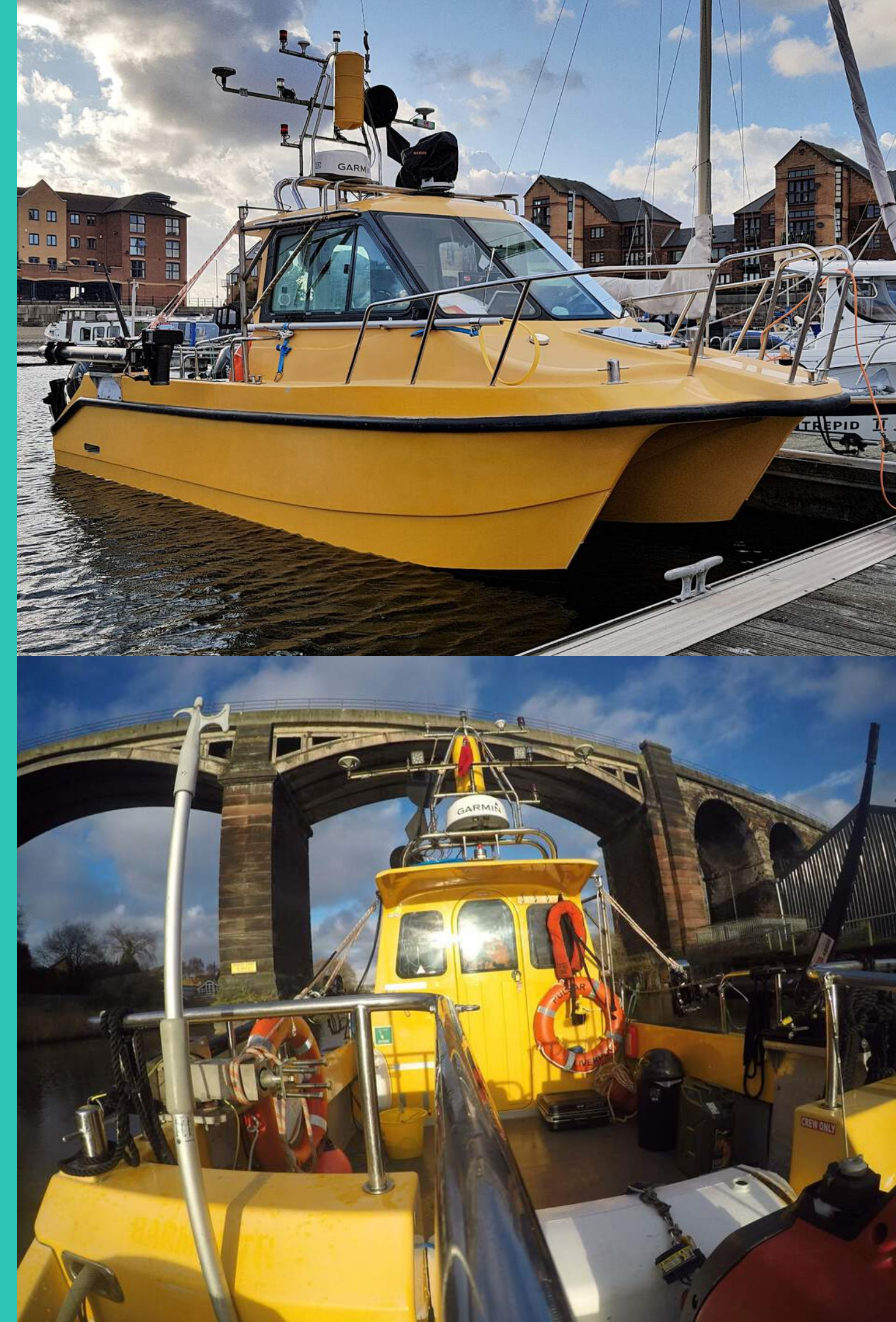
Pulsar:

Permanently Mobilised Survey Vessel

Pulsar is a shallow drafted Cheetah Marine catamaran launched in 2006, and fully refitted during 2018 and acquired by SEP Hydrographic in May 2020

Pulsar is permanently mobilised with a suite of high specification equipment to carry out asset inspection surveys, including a high-resolution scanning sonar, marine laser scanner and multibeam echosounder systems. The vessel can be equipped with additional geophysical survey sensors which can be tailored to project requirements. Our advanced survey equipment is installed using custom-built over the side mounts, providing repeatability.

The survey equipment and personnel are housed within the forward cabin area of the vessel, providing a comfortable working environment.



Asset Inspection Surveys



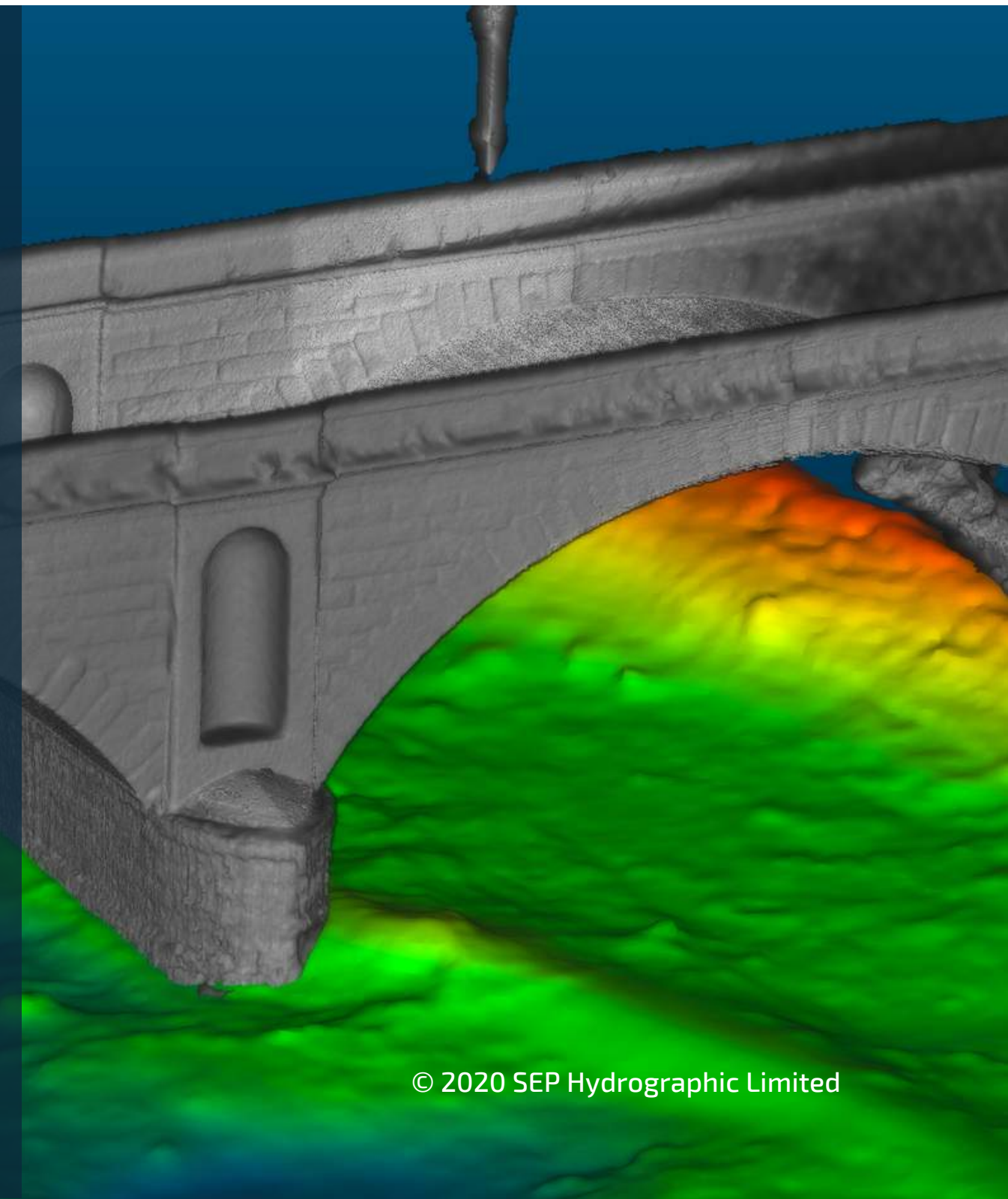
We offer a proven methodology and equipment inventory that provides a 21st century solution to coastal asset inspection.

High resolution point cloud data can be collected from seabed to rooftop and presented, providing a 3D perspective of assets that may have previously been inaccessible for efficient and accurate measurement techniques.

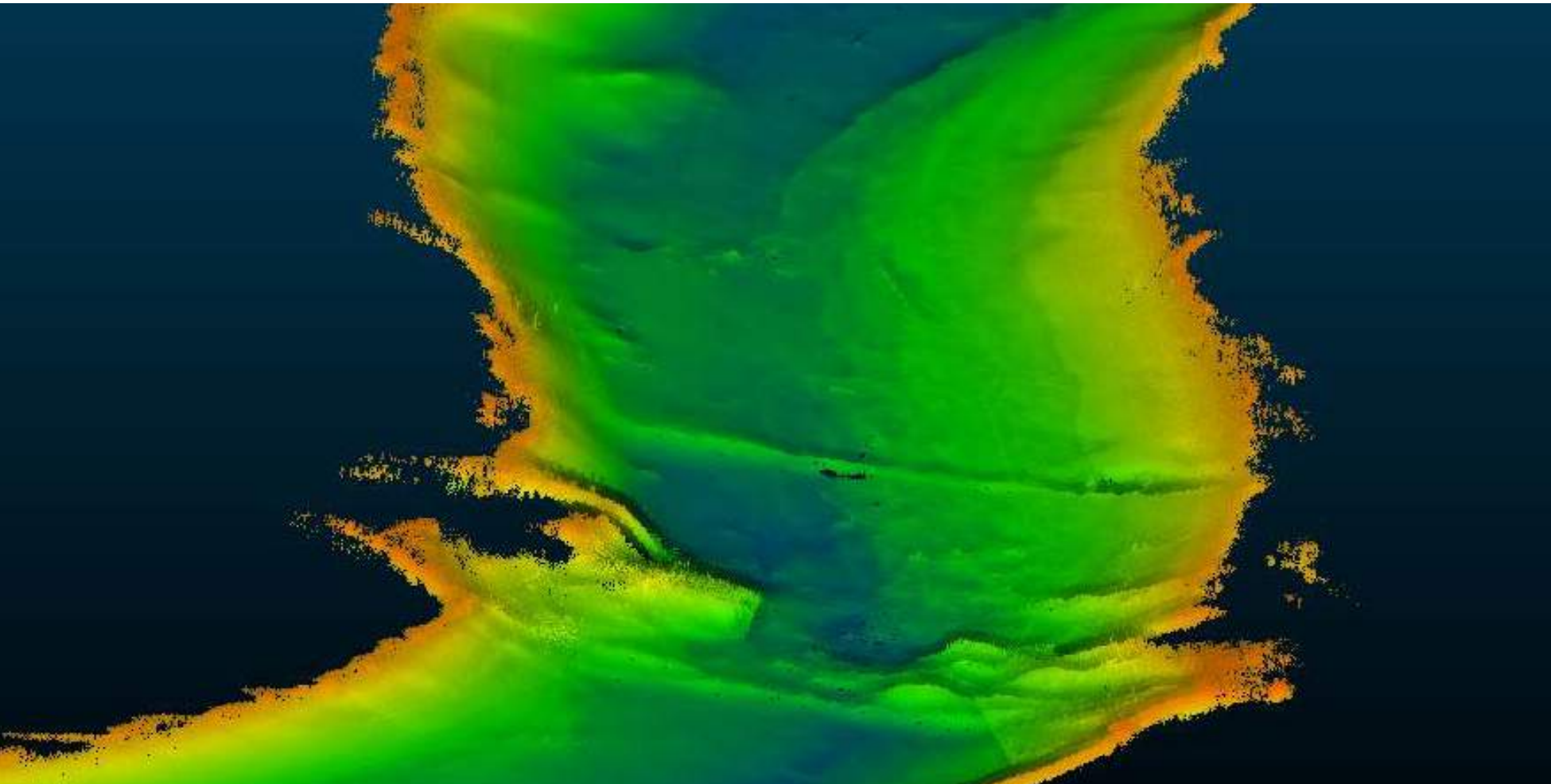
Simultaneous deployment of the following sensors, with data acquired in a single pass.

- Multibeam Echo Sounding
- Scanning Sonar
- Laser Scanner
- Photogrammetry

Sensors are permanently mobilised on our road transportable survey vessel to allow rapid response to our clients needs.



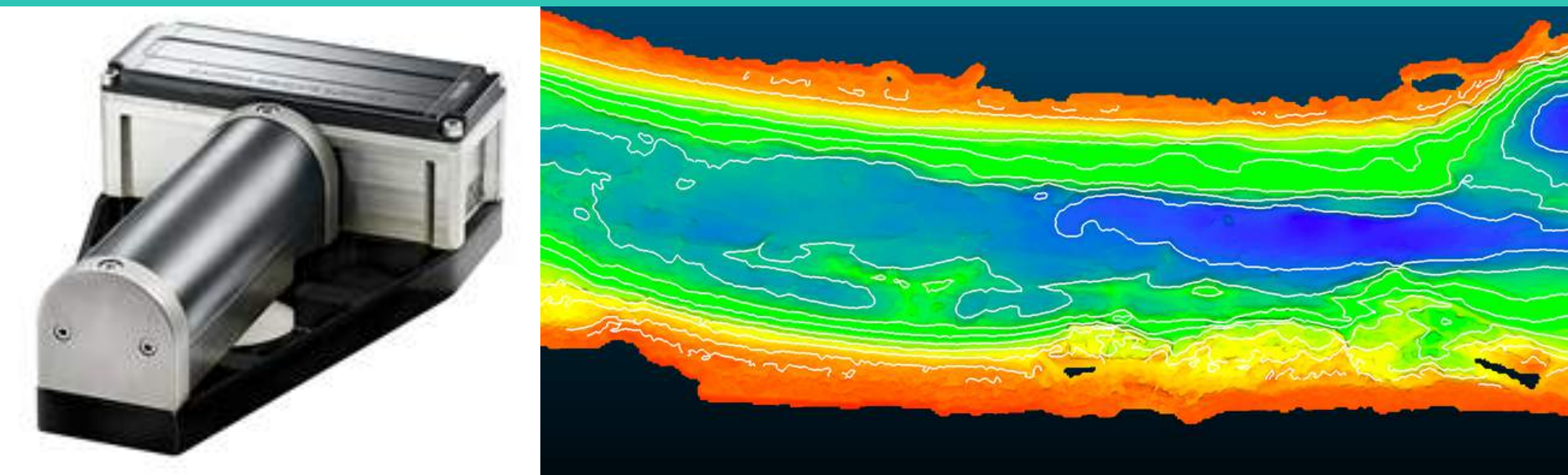
Hydrographic Surveys



A core specialism of SEP Hydrographic is the use of an of acoustic sensors to map the depth and form of the seabed including coastal areas, ports, harbours, rivers lakes and inland waterways.

In addition we can combine this data with our conventional topographical or UAV surveys to provide a complete survey package.

- Multibeam Echo sounding
- Singlebeam Echo sounding



Oceanographic and Environmental

We offer a number of oceanographic and environmental services to complement bathymetric and structural surveys.

ADCPs are hydroacoustic current meters which use the Doppler effect to measure current water velocities throughout the water column. The ADCP emits a sound burst along downward angled beams, with echos returning from scattered particles carried by water currents. A second burst can then be transmitted to track seabed movement.

ADCP's can be deployed either on a vessel to examine a large area such as a river, or stationed at a single location over a sustained period. Suspended Sediment can also be quantified to aid understanding of sediment transport

Other services include:

- Water Column Analysis
- Water Sampling
- Grab Sampling
- Laboratory Testing and Analysis.



Geophysical Surveys

To complement our hydrographic survey offering we also provide a full suite of geophysical surveying techniques.

- Side Scan Sonar
- Sub Bottom Profiling
- Magnetometer
- UXO

Land-based mapping and profiling techniques are also available to provide a complete solution.

UAV Surveys



SEP are able to provide UAV Surveys with both LiDAR and photogrammetry payloads that would ordinarily be out of reach of land or vessel based systems, whether that be using our vessel as an operating platform or operating independently.

Combining photogrammetry techniques with UAV LiDAR can give enhanced results across a range of applications from surveying a bridge deck to wind turbine inspections, drones make it easy to cover large or difficult to access areas in minutes.

Results can be faster and more cost effective for Clients where repeat surveys are needed to monitor environmental conditions or provide situational analysis on a on an ongoing basis

Land Surveys

SEP Hydrographic can call upon the skill and expertise of SEP Projects to complete the picture from the intertidal zone to land.

Using the latest equipment and techniques we can provide the following surveys:

- Land Topographical
- Laser Scanning
- Underground Utility

All of our surveys are conducted in the project-specific co-ordinate system and Datum, as well as being supplied to the client in a wide range of 2D and 3D formats depending upon the requirement.

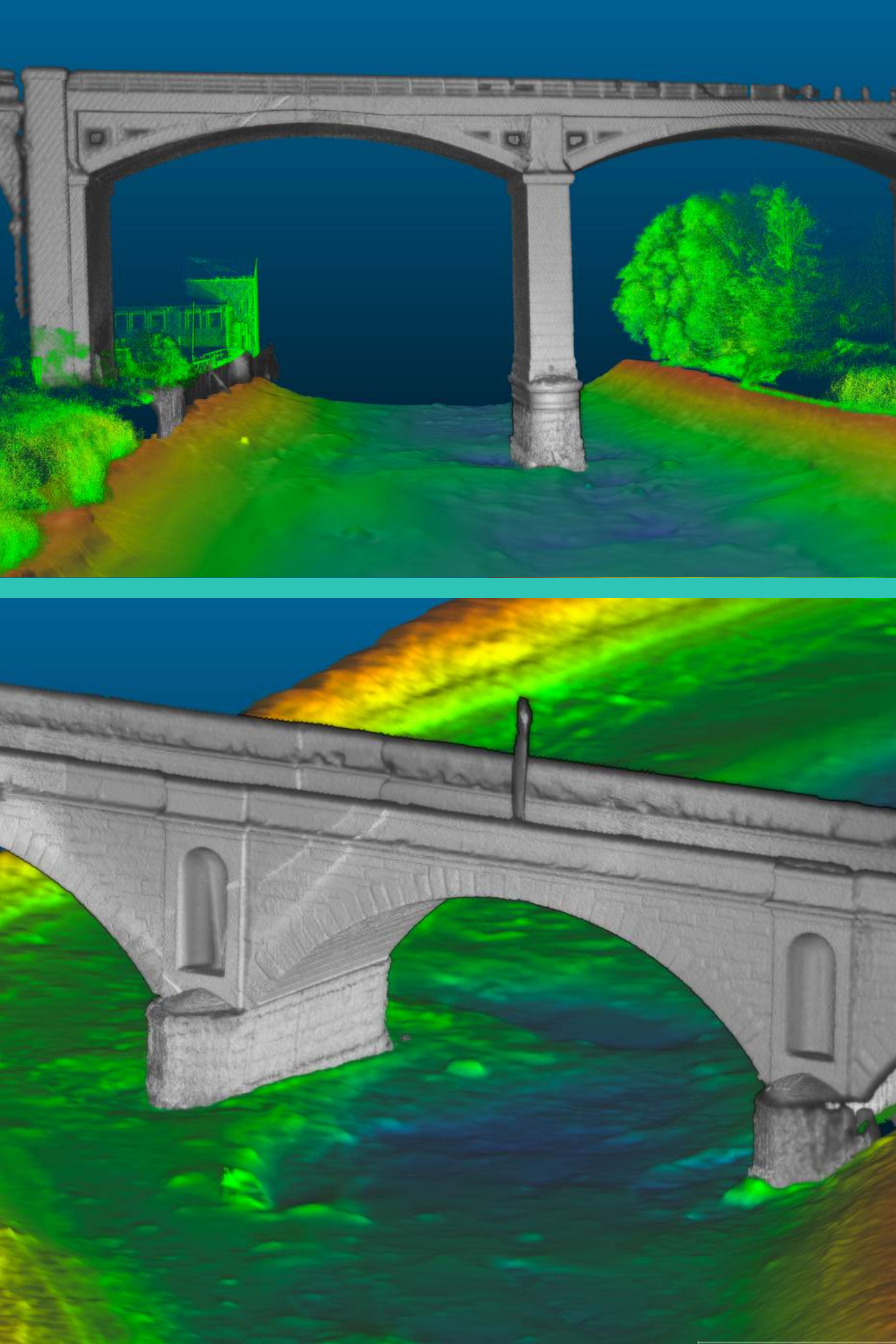


CAD Services

SEP's in-house drafting and CAD team can produce a wide range of drawings and models.

SEP can quickly and efficiently prepare:

- BIM solutions
- 3D models
- Evaluate and analyse dredging operations
- CAD Services



Online Data Portal

We can provide access to the data products via our Scanning E-Portal, allowing for further interrogation.

Intuitive to use, authorised users can access and further study the data. An overview map enables you to quickly find and select the area of interest, which can be viewed and interrogated.



© 2020 SEP Hydrographic Limited

Our Experience



Our senior management team have over 45 years of survey experience on a variety of intertidal, near shore and offshore marine operations for projects including; civil engineering, telecommunications, pipeline routes, inspections and a variety of oceanographic surveys.



Contact Us

SEP Hydrographic Ltd
Unit 3D Selby Place, Stanley Industrial Estate,
Skelmersdale WN8 8EF

Tel: 01695 729 835

<https://www.sephydrographic.com>

Email: info@sephydrographic.com

